

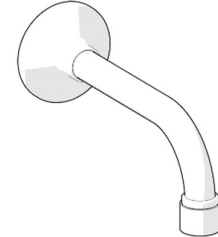
**Product Installation Guidelines**

Document No.: 001.00.30.07  
Version 2, 15 August 2023, Page 1 of 4

## GalvinLab® CP-BS Wall Trough Outlet w/ V/R Aerator

**PRODUCT CODES:**

- 84186
- 84189
- 84194



**PRODUCTS**

Item Code	Description	WELS Rating	Water Consumption	Nominal Flow Rate
84186	CP-BS Wall Trough Outlet 115 w/ V/R Aerator [MTO]	5	5.0	4.9
84189	GalvinLab® CP-BS Wall Trough Outlet 165 w/ V/R Aerator	6*	3.5	3.41
84194	CP-BS Wall Trough Outlet 225 w/ V/R Aerator [MTO]	5	5.0	4.9

\*Components are dual-star rated. See "Dual-Star Rated Items" table for more information.

**SPECIFICATIONS**

- Fitted with Vandal Resistant Aerator.
- Finished in bright chrome plate for easy cleaning and durability.

**IMPORTANT:** All GalvinLab® healthcare taps are tested in accordance with AS/NZS 3718 and leave our premises in good working order.

**WARNINGS:** Special attention to be paid on notes, photos, images, or drawings of assembly steps marked with the warning symbol.



**TECHNICAL DATA**

Inlet	½" BSP – Female	
Outlet	Laminar Flow Aerator	
Headwork	N/A	
Working Pressure Range (kPa)	Min	50
	Max	500
Working Temperature Range (°C)	Min	5
	Max	80
Nominal Flow Rate (LPM)	84186, 84194	4.9
	84189	3.41
Finish	Chrome	

**NOTE:** Galvin Engineering continually strive to improve their products. Specifications may change without notice.

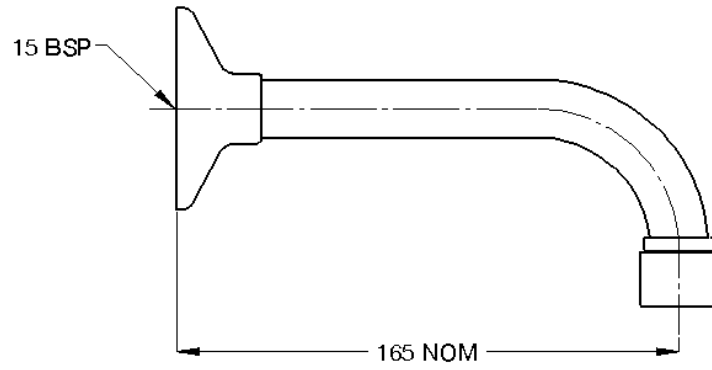
**TOOLS REQUIRED**

- Spanner or adjustable crescent
- Hex key
- Thread tape

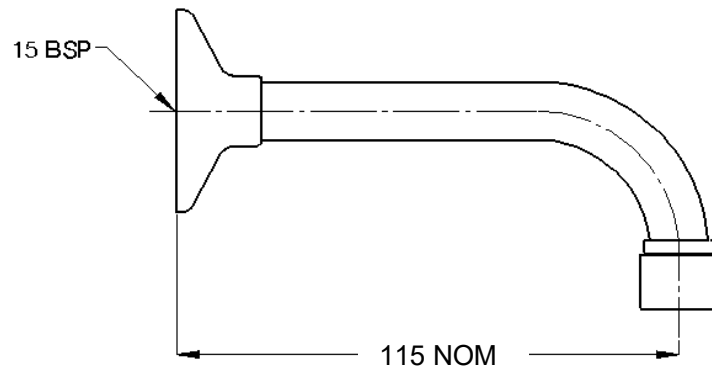
**PRE-INSTALLATION**

**DIMENSIONS**

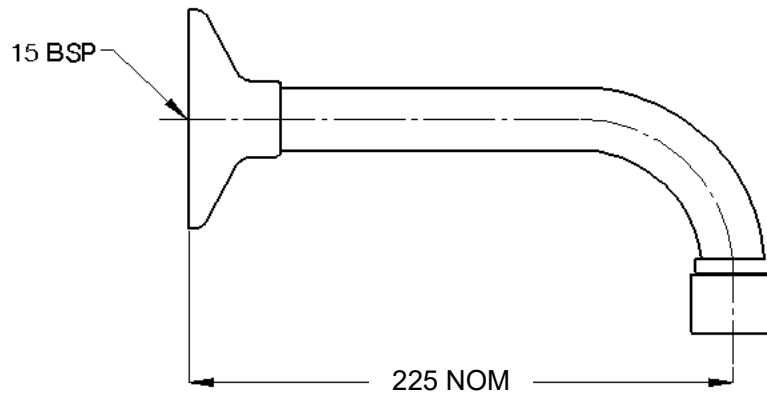
Note: Before installation, all lines must be flushed. We recommend that a line strainer be installed prior to drinking taps to eliminate any foreign material.



**84189**



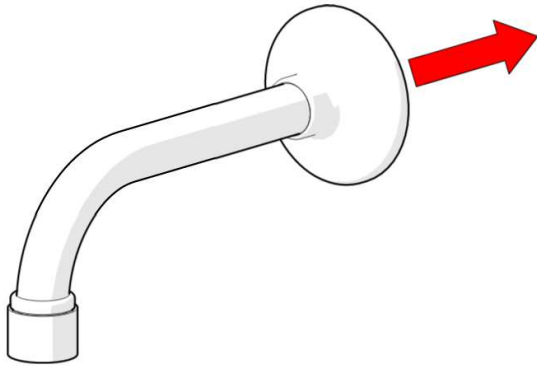
**84186**



**84194**

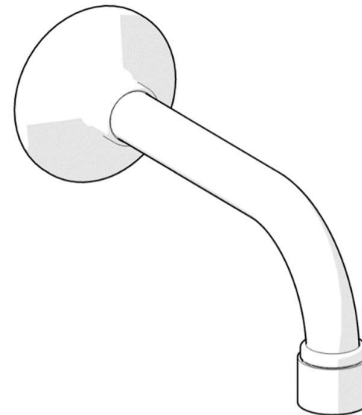
**INSTALLATION**

**INSTALLATION COMPLIANCE:** Galvin Engineering products must be installed in accordance with these installation instructions and in accordance with AS/NZS 3500, the PCA and your local regulatory requirements. Water and/or electrical supply conditions must also comply to the applicable national and/or state standards. Failing to comply with these provisions shall void the product warranty and may affect the performance of the product.



**1. Fit Outlet**

- Fit and screw outlet to wall spud, ensure thread tape is used.



**2. Testing**

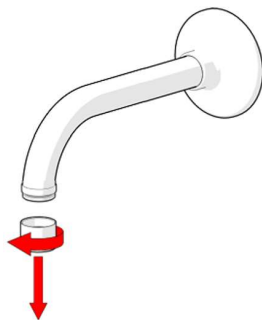
- Once fully assembled, check for leaks and correct operation.

**DUAL-STAR RATED ITEMS (WELS)**

Due to some state requirements, items are required to be in higher star rating (6-star). Therefore, for some items, two flow regulators are supplied. Primarily, the higher star-rated flow regulator is equipped in the assembly.

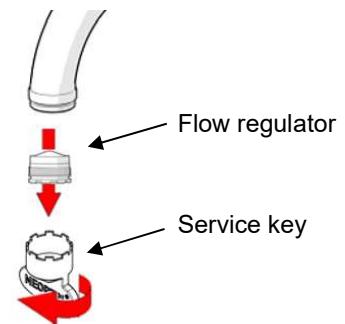
Items	Primary Flow Regulator	Alternative Flow Regulator
84189	6-stars (blue)	5-stars (orange)

**CHANGING FLOW REGULATOR (84189 ONLY)**



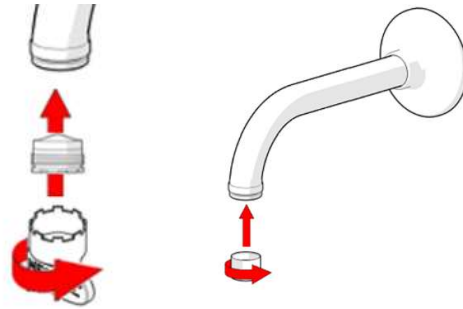
**1. Remove Aerator Housing**

- Turn housing to loosen and to remove as shown.



**2. Remove & Swap**

- Match the grooves of the service key with the aerator.
- Turn the key to loosen and to remove aerator.
- Fit the supplied alternative flow regulator.



**3. Reassemble**

- Reverse steps 2 & 1 to reassemble ensuring correct orientation.
- Test for leaks and correct operation

**TROUBLESHOOTING**

PROBLEM	CAUSE	RECTIFICATION
No water flow	Water is turned off	Turn water on
	Flow regulator is blocked by debris	Remove flow regulator from spout and remove debris. Install an inline strainer.

**WARRANTY**

The warranty set forth herein is given expressly and is the only warranty given by the Galvin Engineering Pty Ltd. With respect to the product, Galvin Engineering Pty Ltd makes no other warranties, express or implied. Galvin Engineering Pty. Ltd. hereby specifically disclaims all other warranties, express or implied, including but not limited to the implied warranties of merchantability and fitness for a particular purpose.

Galvin Engineering Pty Ltd products are covered under our manufacturer’s warranty available for download from [www.galvinengineering.com.au](http://www.galvinengineering.com.au) Galvin Engineering Pty Ltd expressly warrants that the product is free from operational defects in workmanship and materials for the warranty period as shown on the schedule in the manufacturer’s warranty. During the warranty period, Galvin Engineering will replace or repair any defective products manufactured by Galvin Engineering without charge, so long as the terms of the Manufacturer’s warranty are complied with.

The remedy described in the first paragraph of this warranty shall constitute the sole and exclusive remedy for breach of warranty, and Galvin Engineering Pty Ltd shall not be responsible for any incidental, special or consequential damages, including without limitation, lost profits or the cost of repairing or replacing other property which is damaged if this product does not work properly, other costs resulting from labour charges, delays, vandalism, negligence, fouling caused by foreign material, damage from adverse water conditions, chemical, electrical or any other circumstances over which Galvin Engineering has no control. This warranty shall be invalidated by any abuse, misuse, misapplication, improper installation or improper maintenance or alteration of the product.

Within Australia: 1300 514 074 Outside Australia: P: +61 (0)8 9338 2344

F: +61 (0)8 9338 2340

[sales@galvinengineering.com.au](mailto:sales@galvinengineering.com.au)

[www.galvinengineering.com.au](http://www.galvinengineering.com.au)

ABN: 78 008 719 382

PERTH | SYDNEY | MELBOURNE | BRISBANE | ADELAIDE

